

CHRONOTRACE

RFID tags for sports timing

GENERAL CHARACTERISTICS

Tag dimensions: 105 x 40 x 2 mm

Delivery format: 2 mm EVA foam spacer wet

Adhesive: Solvent free permanent adhesive

Standard face material: White polypropylene

Reel format: 300 pcs/reel

Inner core: 76 mm

External diameter: 200 mm

Unwind direction: Label side out

Operating frequency: Global (860 - 960 MHz)

Chip: IMPINJ Monza R6 / R6P

EPC Memory: 96 / 128 bits auto serialized

USER Memory: NA / 32 bits

TID Memory: 64 bit with 48 bit unique serial number

RF Protocol: ISO-18006-C, EPC Class 1, Gen 2

RoHS: EU Directive 2011/65 EU Compliant

Quality assurance: 100% read tested with
out-of-tolerance inlay marked

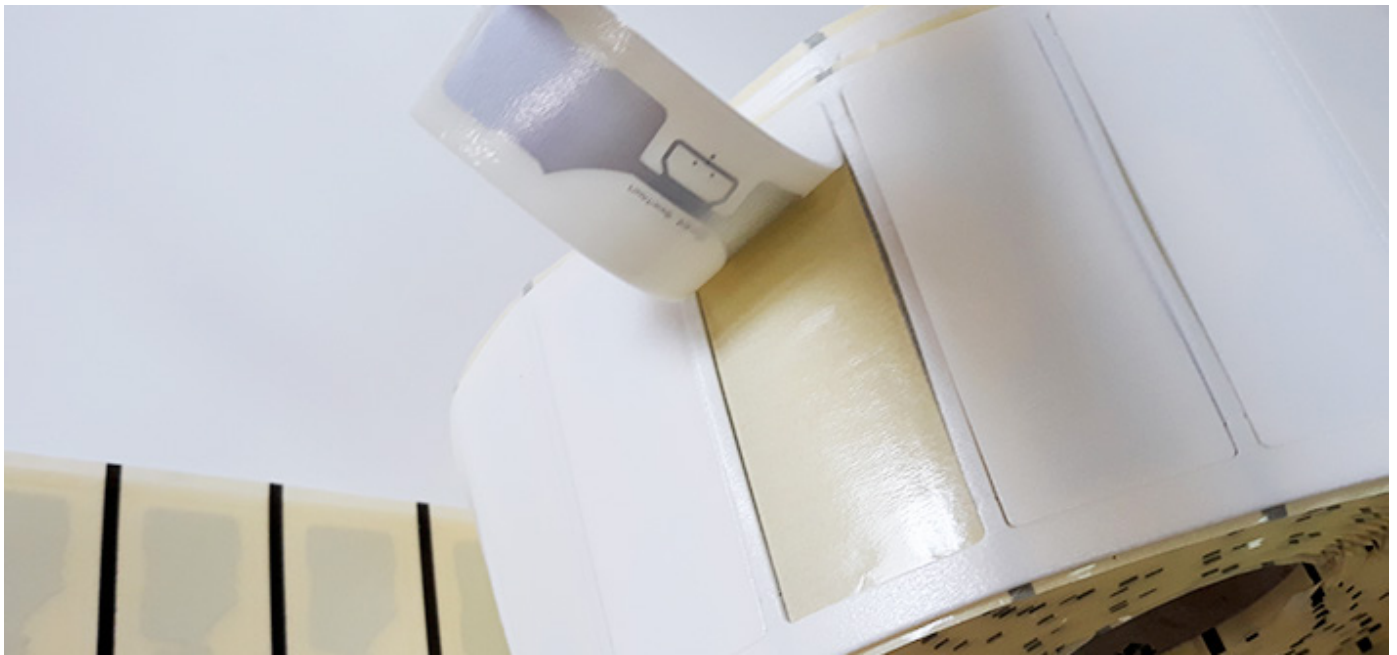
Operating temperature: -40°C to 85°C

Shelf life: +20°C, 50% RH minimum

COMMON APPLICATIONS

-Sports timing

Minimum order quantity: 10,000 pcs. Average of units per roll: TBD.



RFID solution created for all types of sports competitions where the follow-up and timing of the participants must be detailed and fast. Thanks to its format, the label can be placed near the torso without this altering its performance because of the high water content of the human body.

CARE AND HANDLING RFID inlays are sensitive to ESD. Observe standard practices to keep environmental static charge to a minimum. APPLICATIONS This product should be tested by the customer/user thoroughly under end use conditions to ensure the product meets the requirements. Trace-ID does not represent that this product is fit for any purpose or use. PRODUCT CHANGES Trace-ID reserves the right to modify, change, supplement or discontinue product offerings at any time without notice. © 2018 Trace-tech Id Solutions S.L. All rights reserved.