

R3741L

RFID dual tag for logistics and retail in the apparel industry

GENERAL CHARACTERISTICS

Wet / White Wet Inlay dimensions: 46 x 36.5 mm

—Antenna dimensions: 44 x 34.34 mm

Standard pitch: 39.68 mm

Chip: EM Microelectronic Echo RAINFC Dual Frequency

Operating frequency: 13.56 MHz (HF), and 860-960 MHz (UHF)

Inlay substrate material: PET

Inlay-to-liner adhesive: SH3020 (Arconvert)

Liner material: CC62 (Arconvert)

Total thickness over chip: 170 microns

MEMORY

Shared memory and shared unique ID

Minimum 100k write cycles endurance

Minimum 10 years data retention

32-bit Shared unique ID included in:

NFC Memory: 7 bytes UID

EPC Memory: 96-bit TID

USER Memory: 2080-bit or 1984-bit including:

1920 bit contiguous user data from NFC

160 or 64 bit USER contiguous data from EPC

128-bit or 224-bit UUI/EPC encodings

1 step encoding possible from NFC or EPC interface

HF NFC INTERFACE

RF Protocol: ISO/IEC 14443A-3 compliant tag

NFC Forum™ Type 2 compatible

UHF EPC INTERFACE

RF Protocol: ISO/IEC 18000-63 compliant

EPC™ Gen2 V2 certified

Standard web width: 110 mm

Unwind direction: Label side out

RoHS: EU Directive 2011/65 EU Compliant

Quality assurance: 100% read tested with

out-of-tolerance inlay marked

Operating temperature: -40°C to 85°C

COMMON APPLICATIONS

–Product identification

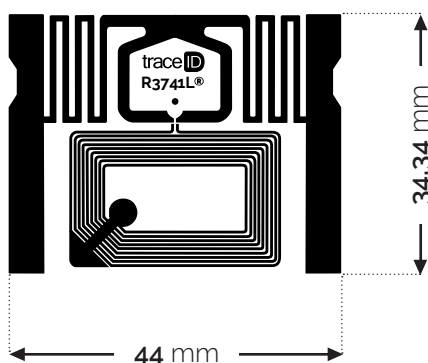
–Inventory and supply chain management

–Customer engagement, coupons, and loyalty programs

–Asset control

–Single tap quick re-ordering

–Anti-theft



Minimum order quantity: 10,000 pcs. Average of units per roll: TBD.

Until now the advantages of RFID were almost exclusively exploited in supply chain management and logistics, and final retailing customers didn't notice its benefits. From now on, dual tags like R3741L extend these benefits even for retailing customers thanks to combining Near Field communication (HF-NFC) and long-range communications (UHF-EPC-RAIN RFID). **With R3741L Dual Tag, you can manage the traceability of your assets, and finally, also offer a better customer experience.**

CARE AND HANDLING RFID inlays are sensitive to ESD. Observe standard practices to keep environmental static charge to a minimum. APPLICATIONS This product should be tested by the customer/user thoroughly under end-use conditions to ensure the product meets the requirements. Trace-ID does not represent that this product is fit for any purpose or use. PRODUCT CHANGES Trace-ID reserves the right to modify, change, supplement or discontinue product offerings at any time without notice. © 2018 Trace-tech Id Solutions S.L. All rights reserved.