

SINCE OUR BIRTH IN 2007, TRACE ID HAS ALL THE NECESSARY MACHINERY FOR THE COMPLETE MANUFACTURING OF AN RFID TAG IN OUR FACILITIES IN BARCELONA. TRACE ID HAS BECOME ONE OF THE MOST RELIABLE PARTNERS IN THE RFID INDUSTRY. THANKS TO THE LATEST GENERATION MUHLBAUER MACHINERY FOR BOTH BONDING (BEING THE ONLY ONES IN SPAIN TO PERFORM THIS PROCESS) AND CONVERTING, WE CAN OFFER MAXIMUM CUSTOMIZATION TO ALL OUR CUSTOMERS.



GENERAL CHARACTERISTICS

Wet / White Wet Inlay dimensions: 92 x 14 mm.
 Antenna dimensions: 88 x 11 mm.
 Standard pitch: 17,6 mm.
 Operating frequency: Global (860 - 960 MHz).

For all Monza 7 family tags: M730, 750, 770, 780, 781.
 EPC memory: 128 bits, 96 bits, 128 bits, 496 bits, 128 bits.
 User memory: 0 bits, 32 bits, 32 bits, 128 bits, 512 bits.
 TID Memory: 96 bit with 48 bit unique serial number

Inlay substrate material: PET.
 Inlay-to-liner adhesive: SH3020 (Arconvert).
 Liner material: CC62 (Arconvert).
 Total thickness over chip: 170 microns.

Standard web width: 110 mm
 Unwind direction: Label side out
 RF Protocol: RAIN RFID / ISO-18000-63
 and EPCglobal Gen 2v2 compliant
 RoHS: EU Directive 2011/65 EU Compliant
 Quality assurance: 100% read tested w/o
 of tolerance inlay marked
 Operating temperature: -40°C to 85°C

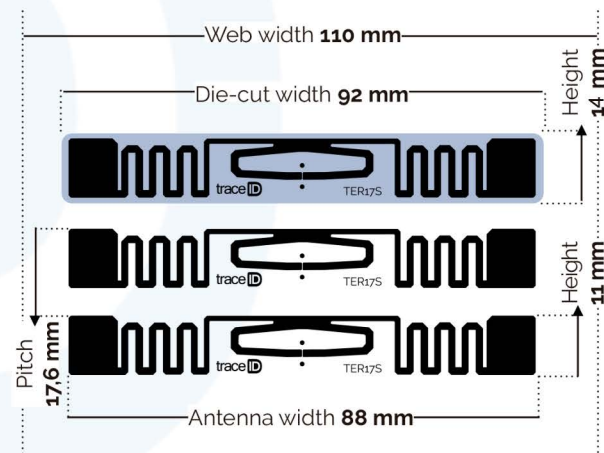
To see a similar inlay with NXP chip or if you want more information, contact us: info@trace-id.com

COMMON APPLICATIONS

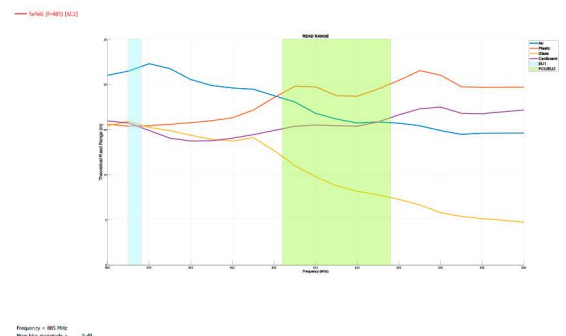
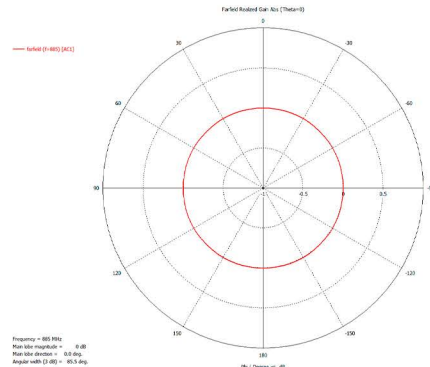
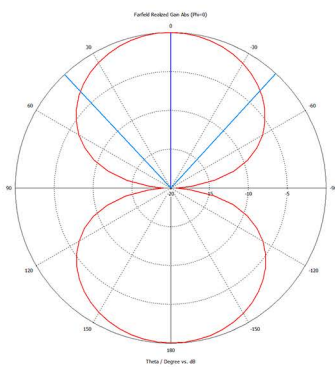
Returnable transport units, supply chain, logistics, industrial automation.

Minimum order quantity: 10,000 pcs.
 Average of units per roll: TBD.

MEASUREMENT AND FORMAT



PERFORMANCE INDICATORS



As we have our own antenna design capacity, we adapt to the most common chips in the RFID market, such as Impinj and NXP. At Trace ID, the verification process of each RFID tag is done through Voyantic, thus guaranteeing maximum performance.

